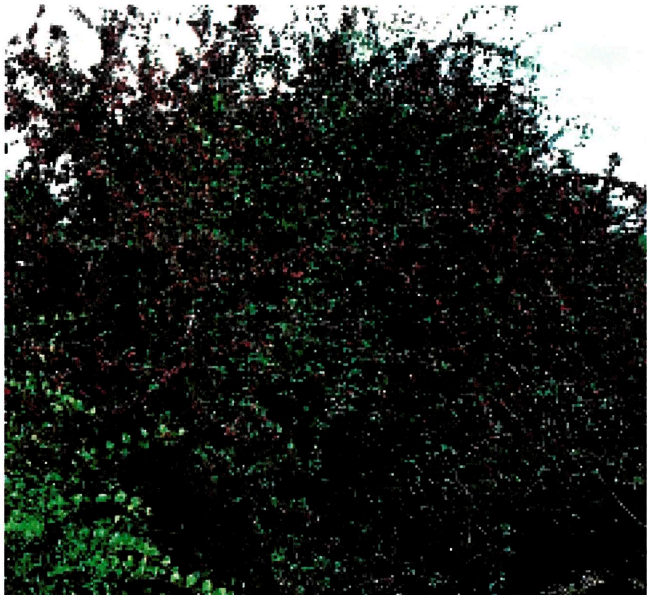


European Cotoneaster



European Cotoneaster (*Cotoneaster integerrimus*)

General Description

European Cotoneaster is a large shrub native to Europe, western Asia and Siberia. 'Centennial' was released by the Natural Resources Conservation Service, Plant Materials Center at Bismarck. Produces showy red fruits.

Leaves and Buds

Bud Arrangement - Alternate.

Bud Color - Brown to pale gray.

Bud Size - 1/8 inch long.

Leaf Type and Shape - Simple, elliptic-ovate with an acute point.

Leaf Margins - Entire with no serrations.

Leaf Surface - Glabrate upper, hairy beneath.

Leaf Length - 3/4 to 1½ inches.

Leaf Width - 1/2 to 1 inch.

Leaf Color - Dark blue-green above, whitish-gray hairs below; yellow fall color.

Flowers and Fruits

Flower Type - Borne in 2-5 flowered cymes.

Flower Color - Pinkish-white.

Fruit Type - Berry-like pome.

Fruit Color - Rosy-red.

Form

Growth Habit - Spreading, open and upright arching branches, large shrub.

Texture - Medium-fine, summer; medium, winter.

Crown Height - 8 to 12 feet.

Crown Width - 8 to 12 feet.

Bark Color - Glossy-brown.

Root System - Fibrous, spreading.

Environmental Requirements

Soils

Soil Texture - Adapted to a variety of soils.

Soil pH - 5.0 to 7.5. Not adapted to alkaline or saline soils.

Windbreak Suitability Group - 1, 3, 4, 4C, 5.

Cold Hardiness

USDA Zone 3.

Water

Likes sites with moisture or high water table. Does not do well on droughty or poorly-drained soils.

Light

Full sun or light shade.

Uses

Conservation/Windbreaks

A tall shrub for farmstead and field windbreaks.

Wildlife

Fruit attracts many species of birds.

Agroforestry Products

No known products.

Urban/Recreational

Wide variety of uses in landscaping.

Cultivated Varieties

Centennial Cotoneaster (*Cotoneaster integerrimus* 'Centennial') - Introduced by USDA-NRCS, Plant Materials Center, Bismarck, North Dakota, as a cultivar seed strain.

Related Species

Hedge Cotoneaster (*Cotoneaster lucidus*)

Pests

Common diseases include fireblight. Common insect pests include pear slug. Cotoneaster should not be planted near ornamental or orchard apples due to increased risk of fireblight damage to the crabapples/apples.

Cotoneaster

Cotoneaster acutifolia



Growth Form: ovoid to irregular

Crown Density: dense

Size: 6-8 feet high

3-5 foot spread

Drought Resistance: very good

Cold Hardiness: excellent

Growth Rate: rapid

Life Span: moderate

Elevational Range: to 9,500 feet

Soil Conditions: good alkaline tolerance

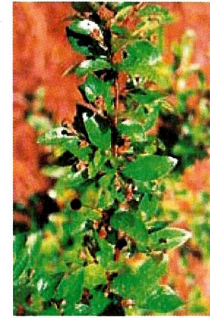
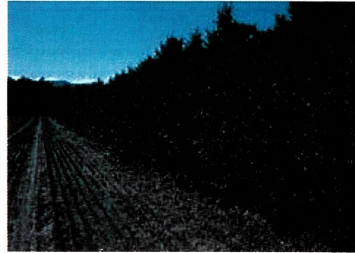
Possible Insect Problems: oyster shell scale

Possible Disease Problems: fireblight; fairly resistant

Wildlife Value: high; song and game birds

Seasonal Color: brilliant red-orange foliage

Miscellany: can be clipped to a hedge



Taken from: Trees for Conservation, a buyer's guide, Colorado State Forest Service